

NORTHERN PACIFIC RAILWAY COMPANY

AUTHORITY FOR EXPENDITURE

Year: **1923**

Superintendent's No. **87**
No.

Dept. No. **106**
Engineering Dept. No.

A. F. E. No. **3**

DEPRECIATION
DOCUMENT
EXTENDED ON
EXHIBIT

Minnesota Div. **Red River** Branch State **N. Dak.** Val. Sec. No. **3.**

AUTHORITY IS REQUESTED FOR A NET EXPENDITURE OF \$ 142,

Accounting distribution as follows: (Distribution to be made in General Office.)

	Operating Expenses	Profit and Loss	Net Operating Expenses	Net Profit and Loss
Cost of property retired . . . \$	74	\$	\$	\$
Value of salvage	46		29	
Incidental costs			30	
Total to Operating Expenses			\$ 59	
Total to Profit and Loss				45
To Material and Supplies				83
To Bills for Collection				\$ 187
To Other Accounts				
Net charge to investment account—Additions and Betterments				83
Total of distribution				\$ 187

Budget reference: **Not in Budget**

Joint facility contract reference: **Not Joint Account**

The location is - - - on this company's property. To secure rights, it will be necessary

Location: **Red River Branch - at Boundary.**

Title and Reason: **Pembina (near) - Relay Rail.**

In connection with relaying of 80# steel by Canadian

National down to boundary line between Manitoba and North Dakota, there is a stretch of 91 track feet of mixed 85, 72, and 56# rail adjoining our 90# rail in Northern Pacific track extending to the ~~xxxxxxx~~ boundary line, which, in order to make a complete job, must necessarily be relayed with 90# rail at the time the Canadian National is doing their relaying.

Informal authority to do this work granted by General Superintendent October 24th, 1923, and it ~~will be taken care of~~ *has been completed*

~~Work~~ *Completed* done by company force ~~under~~ *under* charge of Superintendent. Checked and Entered
President's Office

Accounting to concentrate in the office of **Division Accountant Staples**

Signature and Title: *E. H. Haubert* Superintendent Date **October 31st 1923.**

<p>APPROVED: <i>[Signature]</i> General Superintendent.</p>	<p><i>[Signature]</i> Chief Engineer.</p>	<p><i>[Signature]</i> Assistant General Manager.</p>
<p><i>[Signature]</i> Mech. Supt. Supt. Telegraph or Signal Engr.</p>	<p><i>[Signature]</i> General Manager.</p>	<p><i>[Signature]</i> Vice President.</p>
<p><i>[Signature]</i> General Auditor or Comptroller.</p>	<p><i>[Signature]</i> President.</p>	<p>Date of Final Approval } 1923</p>

COMPTROLLER'S RECORD OF NOTICE OF APPROVAL AND OF COMPLETION

Original Cost Adjustment
Made in 19



192

Emerson, Manitoba

Rel. returned
65° 40'
72° 60'
62° 75'
total = 18°



Manitoba
North Dakota

Propd Relay with 90° Steel
(90° + 90° = 180°)

Old Boundary

NPRy

Minnesota D. by Red River Br.

Sketch Showing

Proposed Relay of Steel with 90°

near Pembina, ND

Office of Dist. Engr. St. Paul, Minn. Oct. 24, 1922

Scale 1" = 400'

Valuation Section No. 3 of N.D.

Proposed Warm Show Road

P-54

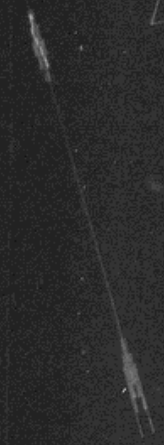
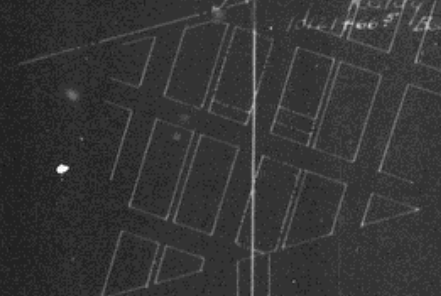
101.271.60



Emerson

Katli/Released	48
71*	60
26*	12
Total	181

Manitoba
North Dakota
22+57 End Relay
101.271.60
905ft. with 90*
Begin Relay



101.271.60

NPR

WINDING Red River Br
Relay Rail at Boundary Line

near DENBINA

Office of Dist. Engr. S. Paul Feb 7 1923

New York State Rd

Authorized under Imp. No 3-23

Work begun Nov 1922

Work completed Nov 6 22

101.271.60