

NORTHERN PACIFIC RAILWAY COMPANY
 AUTHORITY FOR EXPENDITURE

Year: **1922**

Superintendent's No. _____ Tax Dept. No. 489
 No. _____ Engineering Dept. No. _____
 A. P. E. No. **22**

Minnesota Div. Eastern District State **Minn.** Val. No. No. 64
 Yergus Falls Branch

AUTHORITY IS REQUESTED FOR A NET EXPENDITURE OF \$ 513.00

Accounting-distribution as follows: (Distribution to be made in General Office.)

	Operating Expenses	Profit and Loss	Net Operating Expenses	Net Profit and Loss
Cost of property retired	\$	\$	\$	\$
Value of salvage				
Incidental costs				
Total to Operating Expenses				
Total to Profit and Loss				
To Material and Supplies				
To Bills for Collection				
To Other Accounts				
Net change to investment account—Additions and Betterments				\$ 513.00
Total of distribution				\$ 513.00



Budget reference: In budget. Class of Work: No. 28

Joint facility contract reference: No joint property involved.

The location is NOT on this company's property. To secure rights, it will be necessary

Location: Breckenridge.

Title: Assessment for storm sewers, and

Reason: This RFA is made to cover an assessment levied against this company's property as its proportion of the cost of constructing storm sewers shown on blue print attached. The total cost of this improvement was \$15,028.89, all of which was assessed against the property in the district shown on blue print attached. The assessment levied against our property has been checked at Breckenridge and found to have been made on the same basis that other property was assessed, and is correct.

Question of billing on lessees has been submitted to Mr. Watson.

Blue print attached.

Work commenced September 20, 1921.

Work completed November 15, 1921, except placing of catch-basins, which work will be done this spring.

Work to be done by ~~company force~~ contract under charge of city

Accounting to concentrate in the office of tax commissioner.

Signature and Title: *W. T. Sanders* Tax Commissioner Date: January 14th, 19 22

APPROVED:

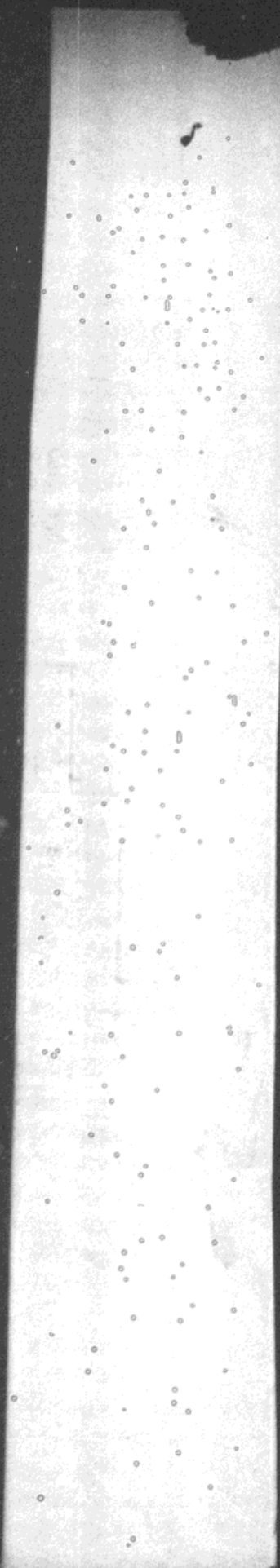
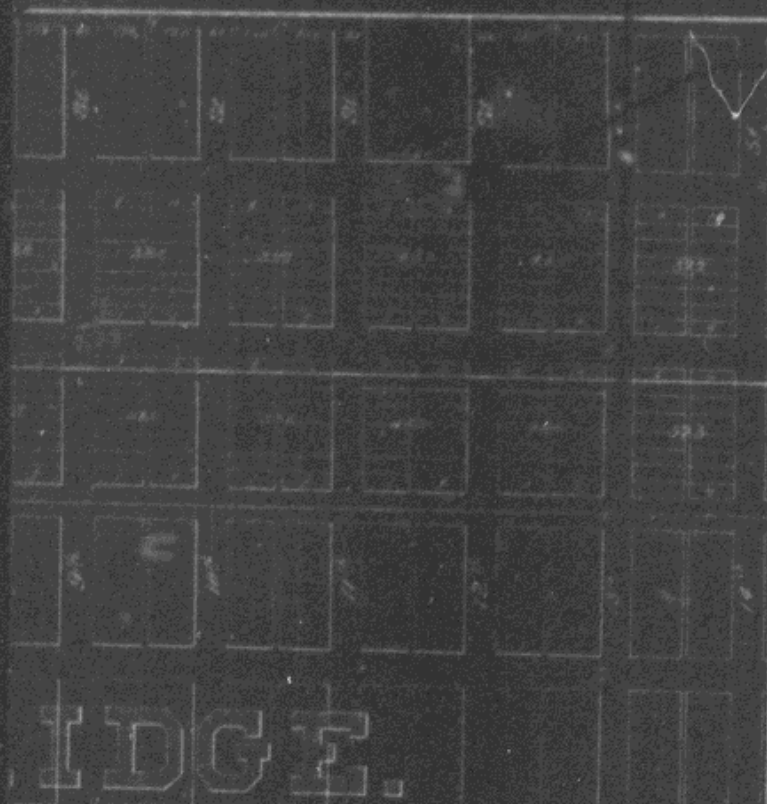
General Superintendent.	Prin. Asst. Engr. or Engr. Maint. of Way.	Assistant General Manager.
Mech. Supt., Supt. T'igh. or Signal Engr.		
Chief Engineer.	General Manager.	Vice President.
<i>[Signature]</i> Comptroller.	<i>[Signature]</i> President.	Date of Final Approval: JAN 24 19 22

COMPTROLLER'S RECORD OF NOTICE OF APPROVAL AND OF COMPLETION



BRECKENR

N.P



EDGE.

Storm water sewers shown: - - - - -
Ry.Co. property assessed shown:
Assessment district shown: _____