

1922

NORTHERN PACIFIC RAILWAY COMPANY
AUDITOR OF CAPITAL EXPENDITURES
AUTHORITY FOR EXPENDITURE

1922

Year: 1922

Superintendent's No. No.

Tax Dept. No. 491
Engineering Dept. No.

A. F. E. No. 106



Minnesota Div. Eastern District State No. Dak. Val. Sec. No. 5
Fergus Falls Branch

AUTHORITY IS REQUESTED FOR A NET EXPENDITURE OF \$789.00

Accounting distribution as follows: (Distribution to be made in General Office.)

	Operating Expenses	Profit and Loss	Net Operating Expenses	Net Profit and Loss
Cost of property retired	\$	\$	\$	\$
Value of salvage				
Incidental costs				
Total to Operating Expenses				\$
Total to Profit and Loss				
To Material and Supplies				
To Bills for Collection				
To Other Accounts				
Net charge to investment account—Additions and Betterments				789.00
Total of distribution				789.00

Checked as to property description J. A. Larson 2/1/22

Budget reference: In budget.

Class of Work: No. 28

Joint facility contract reference: No joint property involved.

The location is not on this company's property. To secure rights, it will be necessary

Location: Wahpeton

Title Assessment for paving Sixth street, etc.

When this work is done to cover an assessment levied against our right of way as the proportion of the cost of paving Sixth street with 7 inch reinforced concrete and bitulithic. See blue print attached for streets paved and Northern Pacific Ry. Co. property assessed. The total cost of this improvement was \$128,635.72, all of which was assessed by the special assessment commission against the property it deemed benefited in accordance with its judgment as to benefits received. The assessment against our property has been checked at Wahpeton and is correct.

No leased property involved. Work commenced May 20, 1919.
Blue print attached. Work completed Nov. 15, 1919.

Work to be done by company under charge of city contract

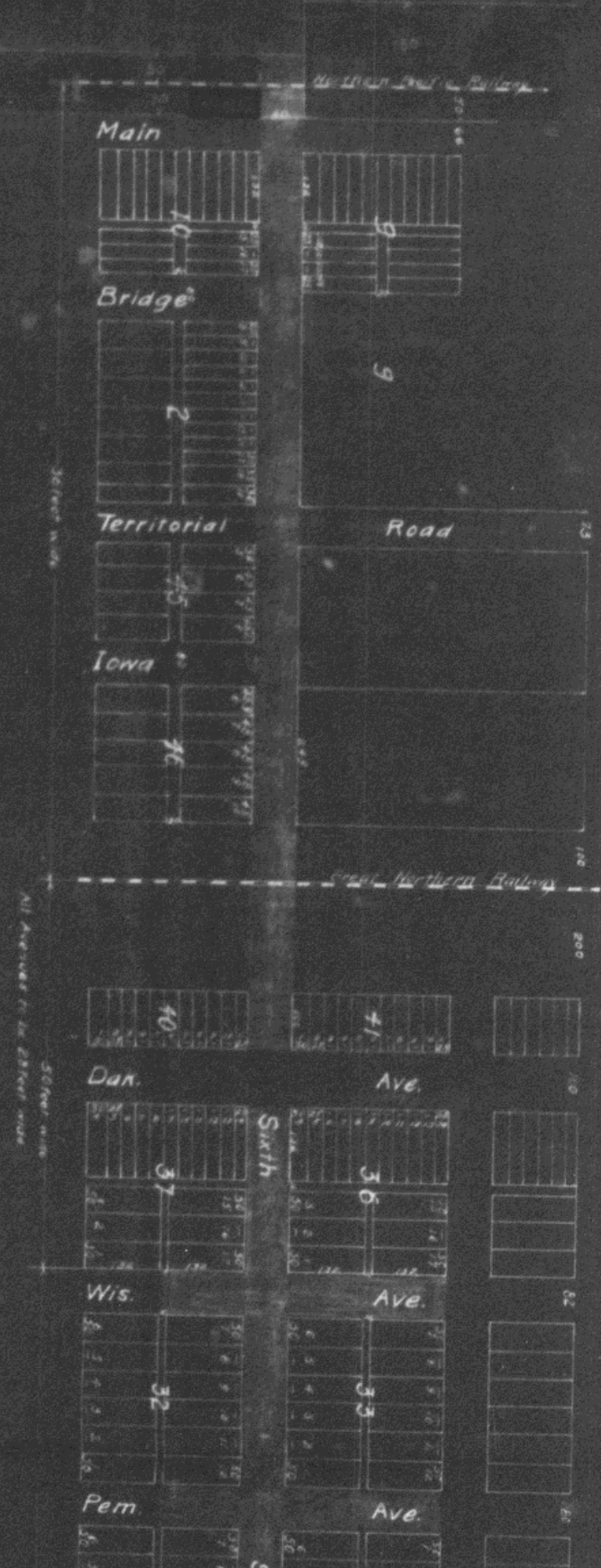
Accounting to concentrate in the office of tax commissioner.

Signature and Title: *W. G. Sanders*
Tax Commissioner.

Checked and Entered President's Office
Date Feb. 3rd, 1922.

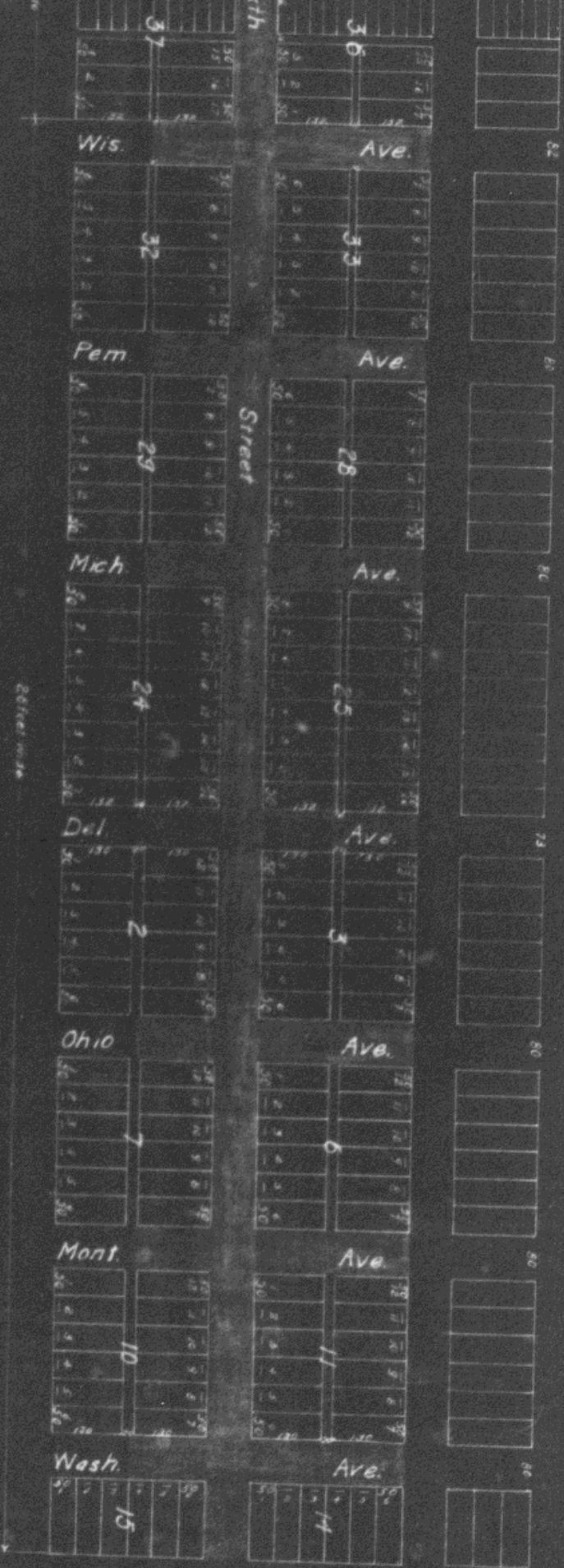
APPROVED:		
General Superintendent.	Prin. Asst. Engr. or Engr. Maint. of Way.	Assistant General Manager.
Mech. Supt., Supt. Teigh. or Signal Engr.		
Chief Engineer.	General Manager.	Vice President.
<i>[Signature]</i>	<i>Charles [Signature]</i>	
General Auditor or Comptroller.	President.	Date of Final Approval
		FEB 3 - 1922

COMPTROLLER'S RECORD OF NOTICE OF APPROVAL AND OF COMPLETION



N.P.Ry.Cc.R/V assessed shown

H.P.Hy.Cc.N/W assessed shown: _____



PAVING

WAHPETON

City Engineer
Washington, D.C.
Feb. 1938