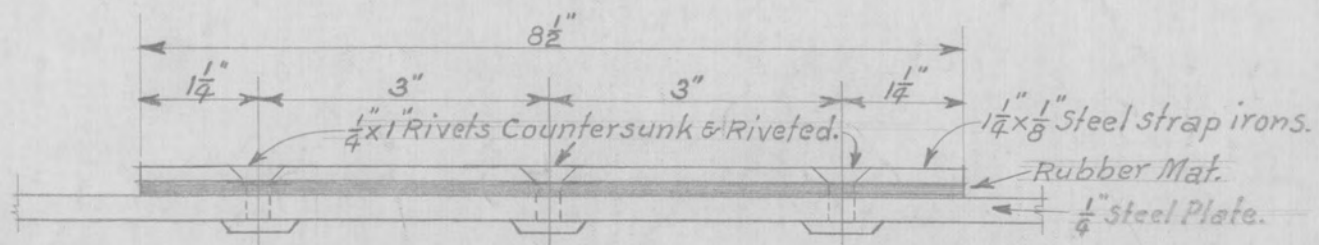


Note:
 Gang Plank to be made of $\frac{1}{4}$ " Steel Plate to conform with detail.
 Rubber Mat similar to that used in Vestibule of Passenger Coaches.



Half size Detail showing fastening of Rubber Mat to steel Plate.

Steel Plate
Gang Plank for
Freight Houses

Scale: 1"=1' Dec. 15th 1937

Approved:

..... Chief Engineer
 Vice President.