

(Insulated wheel)  
(where needed.)

(Insulated wheel)  
(where needed.)

1 x 6" S.I.S. and M. boards. (Pine)  
No. 14 screws - 1 1/2" long.

7/8 x 2 1/8 oak brace - 5'-0" long.

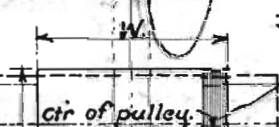
2/4 x 11 1/2" Fir plank (6'-2" long.)  
Centre of plank.

Holes for bolting engine base



1/4" Oil pipe

S (face of pulley)



Openings in deck floor for pulley belt.

Brake Pedal

1/2" diam hole in floor.

1/4" Oil pipe

(Loose wheel)

N.P.Ry.  
**Standard Plan**  
**Track Tools**  
**Motor Car Body.**

Scale 1 1/2" = 1'-0" Sept. 21, 1915.

General Manager.

General Manager.

Chief Engr. M.O.W.

First Vice President.

Note: For table of variable dimensions see sheet T.T. 39.

Plan.