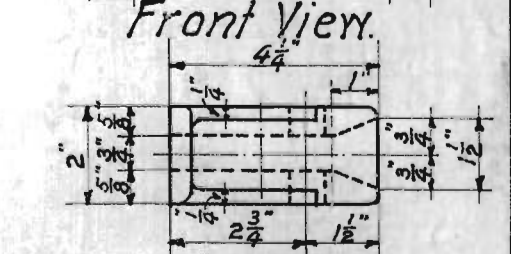
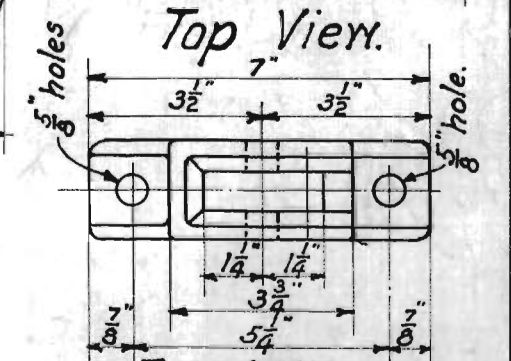
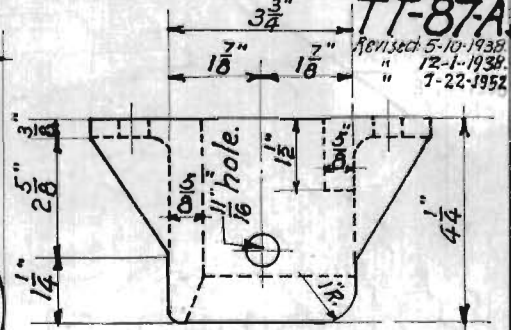
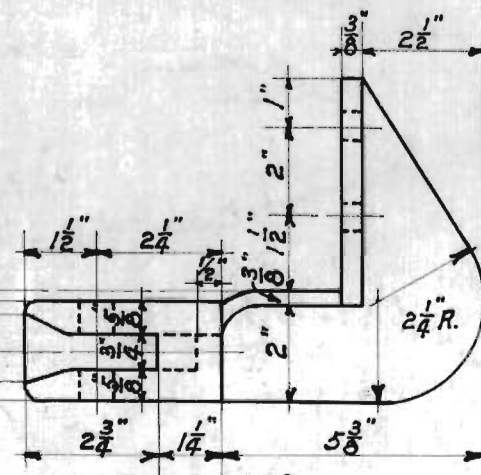
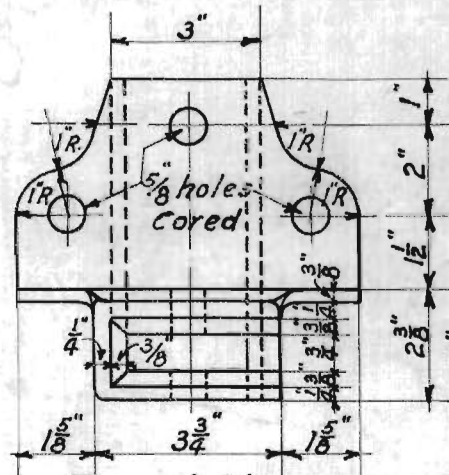
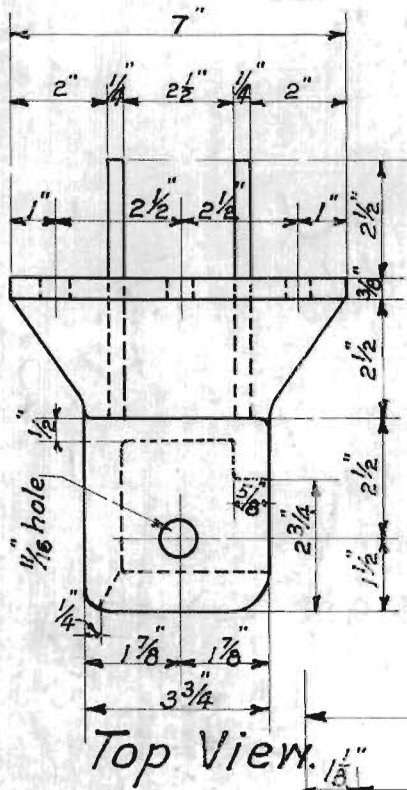
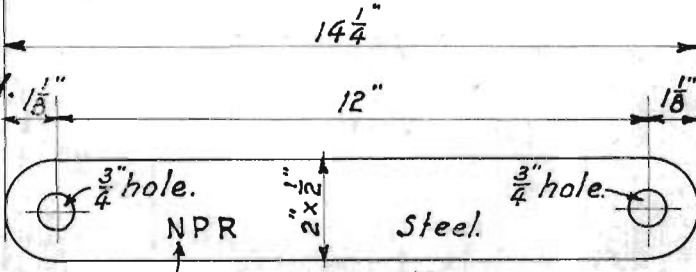


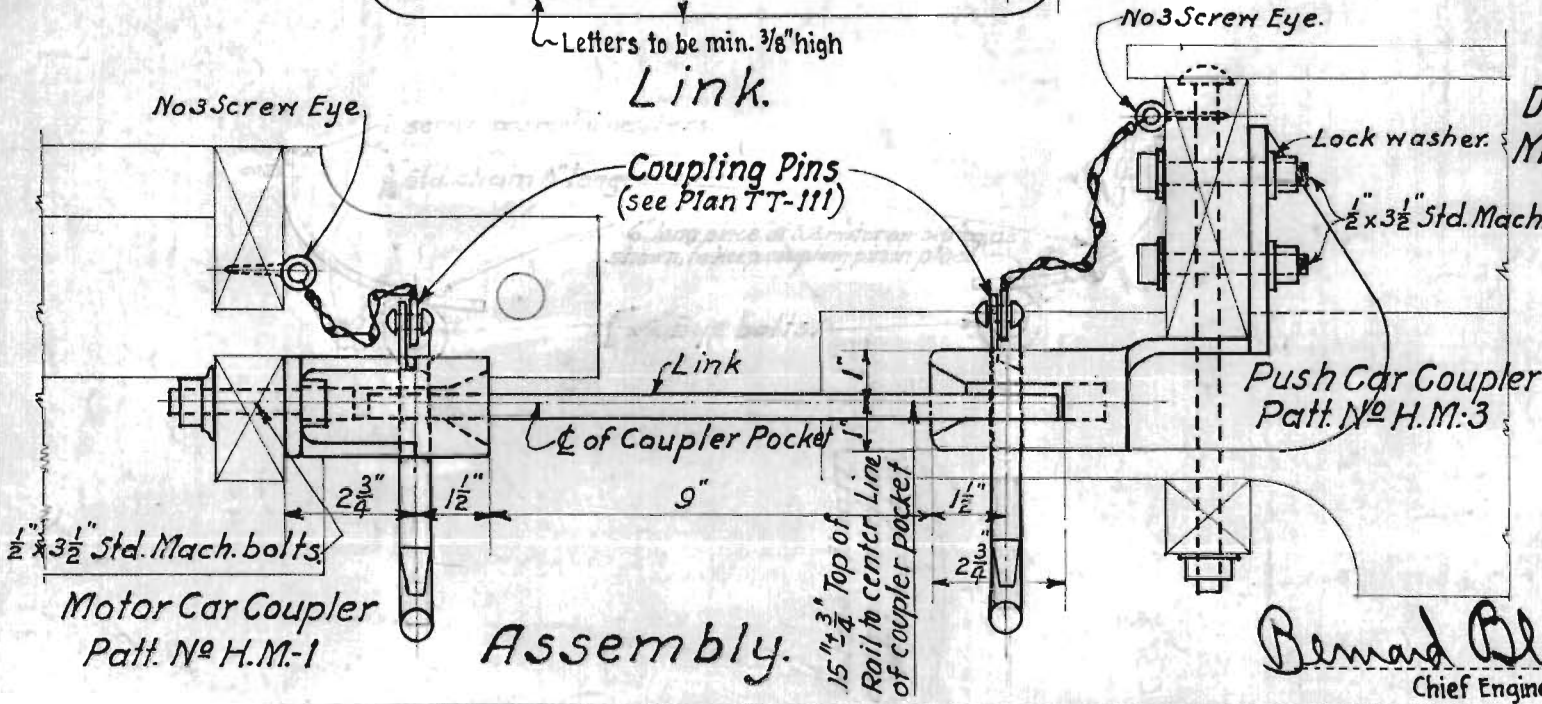
TT-87A
Rev. sect 5-10-1938
12-1-1938
7-22-1952



Front View. Side View. Detail of Malleable iron Push Car Coupler. Patt. No H.M.-3



Link. Letters to be min. 3/16" high



Detail of Malleable iron Motor Car Coupler. Patt. No H.M.-1

N.P.Ry. Standard Plan of Track Tools Push-&Motor Car Couplers.

Scale: 3"=1'-0" Nov. 17th 1937.

Bernard Blum Chief Engineer
Vice President.