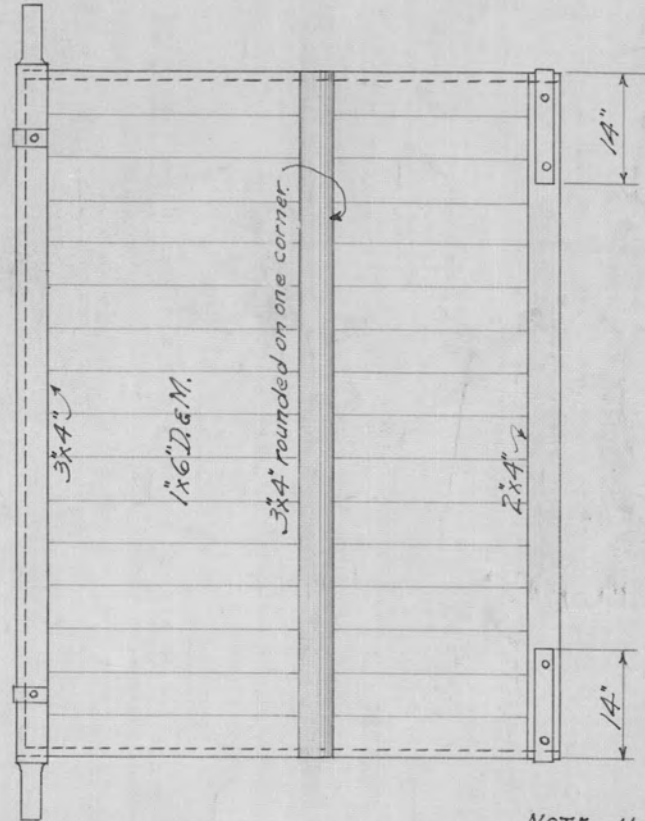
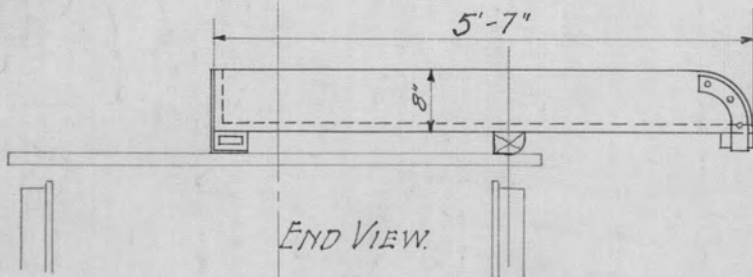


TOP VIEW.

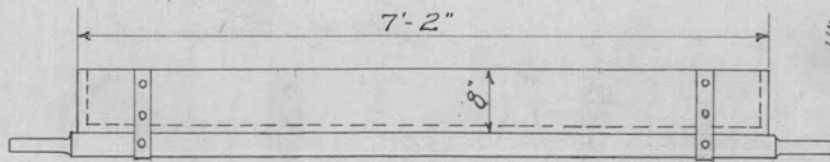
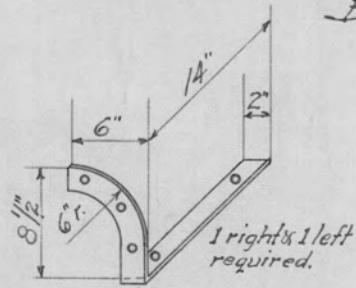


BOTTOM VIEW.

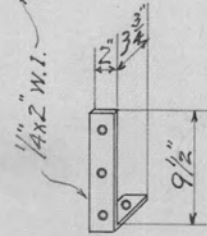
NOTE: Holes in wrought iron straps to be countersunk for 1/4" No. 18 screws.



END VIEW.



BACK VIEW.



2 required.

N.P. Ry.  
Standard Plan  
of Track Tool  
Dumping Box for Push Cars  
 Scale 1/2"=1'-0" Jan 26th, 1918.

-----  
 General Manager.

-----  
 General Manager.

-----  
 Chief Engineer M. of W.

-----  
 First Vice President.