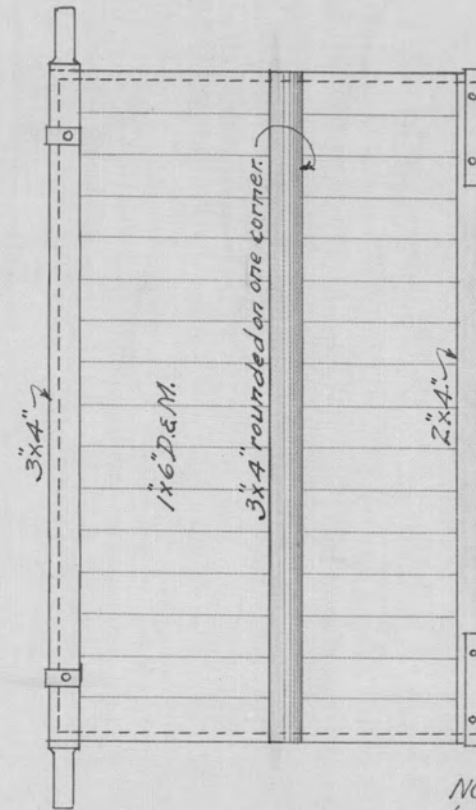
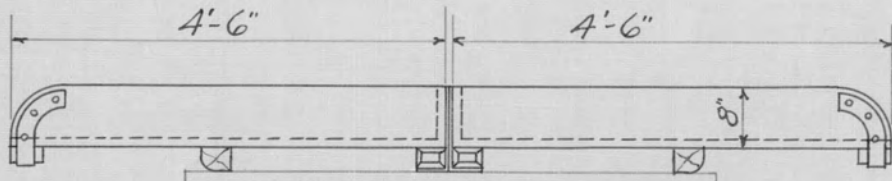


TOP VIEW.

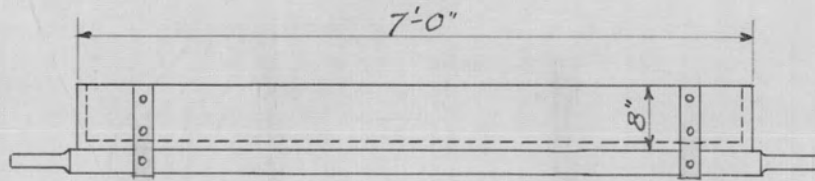


BOTTOM VIEW.

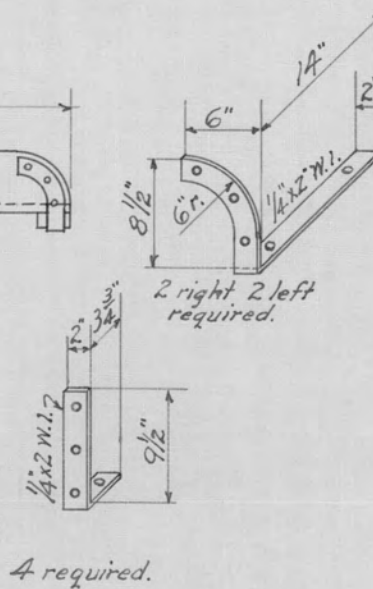
NOTE: Holes in wrought iron straps to be countersunk for 1/4" No. 18 screws.



END VIEW.



BACK VIEW.



N.P.R.R.
Standard Plan
of Track Tool
Dumping Boxes for Push Cars.

Scale 1/2" = 1'-0" Jan. 28th, 1918.

- General Manager,
- General Manager,
- Chief Engineer M. of W.
- First Vice President,