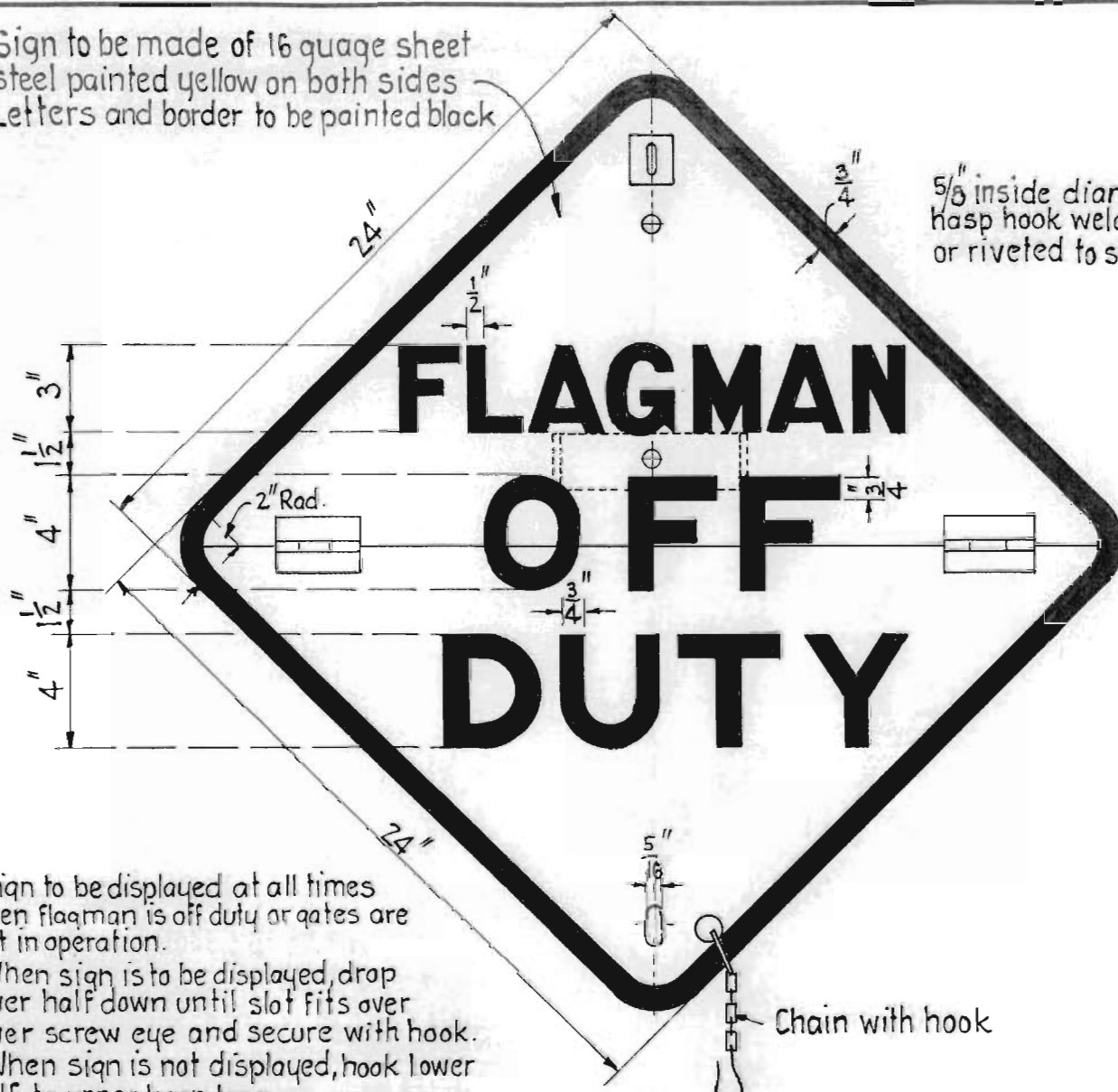
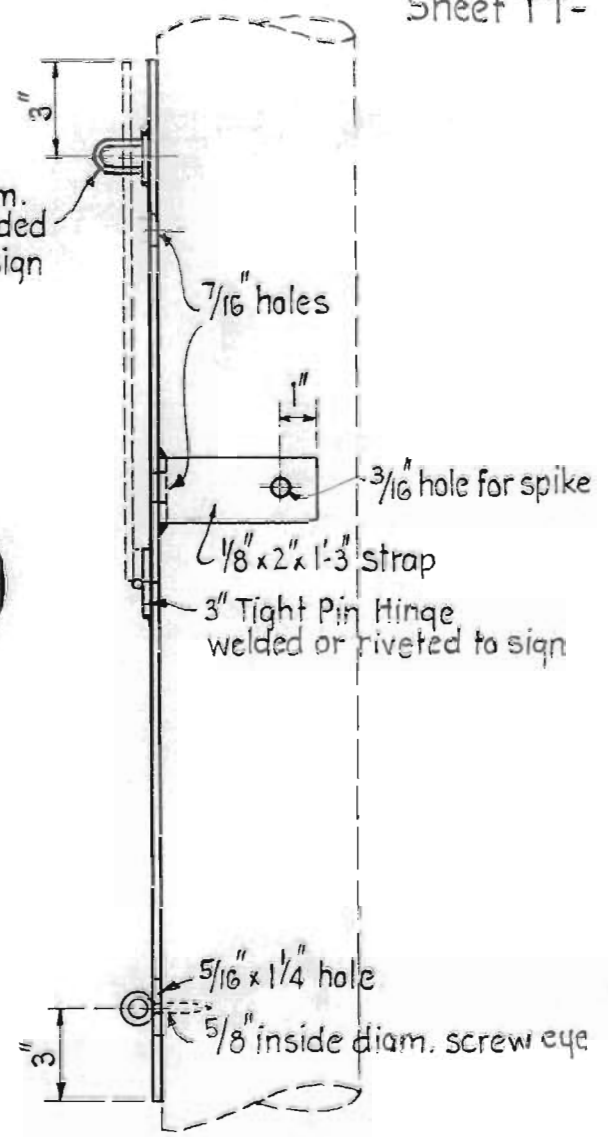


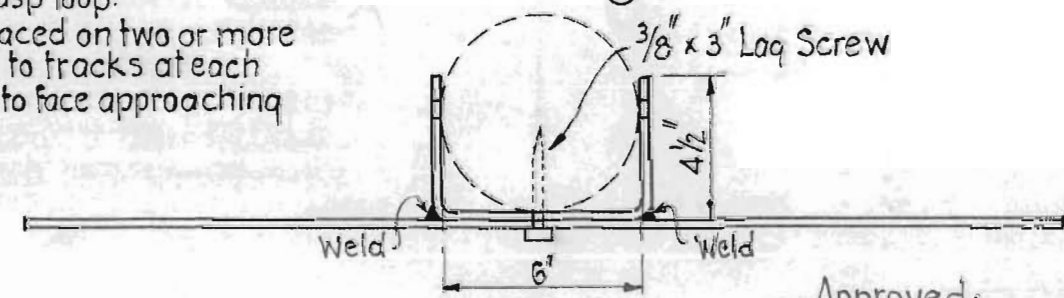
Sign to be made of 16 gauge sheet steel painted yellow on both sides
Letters and border to be painted black



5/8" inside diam. hasp hook welded or riveted to sign



Sign to be displayed at all times when flagman is off duty or gates are not in operation.
When sign is to be displayed, drop lower half down until slot fits over lower screw eye and secure with hook.
When sign is not displayed, hook lower half to upper hasp loop.
Signs to be placed on two or more posts adjacent to tracks at each crossing so as to face approaching traffic.



N.P.Ry.
Standard Plan
of Track Tools
FLAGMAN OFF-DUTY SIGN
For use where there is
Intermittent Crossing Protection
Scale: 2" = 1'-0" Feb. 10, 1947.

Approved:

Chief Engineer Vice President