



R. F. A. No. 109

10256

AUTHORITY FOR EXPENDITURE.

E. D. No.

Requisition dated Dec. 28th 1911

Comptroller's No.

From LAKE SUPERIOR

Division OPERATING

Department.

For Aitkin, Minnesota.

Proposed extension of the Foley spur to accommodate the City Pumping Plant. Net track increase 268 feet.

Amount, \$ 254.00

REMARKS AND RECOMMENDATIONS.

Work to be done by Division Forces.
- Not Joint -

Valuation Section No. 10.

Operating Expenses	- - - \$	
Additions and Betterments	Sect. No. 15	\$ 254.00
	" "	\$
	" "	\$
Material and Supplies	- - - \$	

[Signature]
Engineer in Charge of Way

[Signature]
Chief Engineer of Maintenance of Way

[Signature]
Chief Engr., Mech. Supt. or Supt. Telg'ph.

[Signature]
General Manager

[Signature]
Third Vice-President

[Signature]
Second Vice-President

DISTRIBUTION OF CHARGES.

Operating Expenses	\$
Additions and Betterments	254.00
Material and Supplies	
Rail Renewal Fund	
		Total, \$

WATNEY PAPER CO
JAN 16 1912
TYPE AND DISBS.

Approved JAN 15 1912 191

[Signature]
Comptroller

[Signature]
President

COMPTROLLER'S RECORD OF NOTICE OF APPROVAL AND OF COMPLETION.

Form 1345 issued JAN 19 1912 191

Work commenced

191 Work Completed

191

NORTHERN PACIFIC RAILWAY COMPANY

- Lake Superior Division -

Second District

Aitkin, Minnesota

State of Minnesota

Section No. 10

Estimate of cost of proposed extension of the Voley
spur to accommodate the City Pumping Plant.

Net track increase 268 feet.

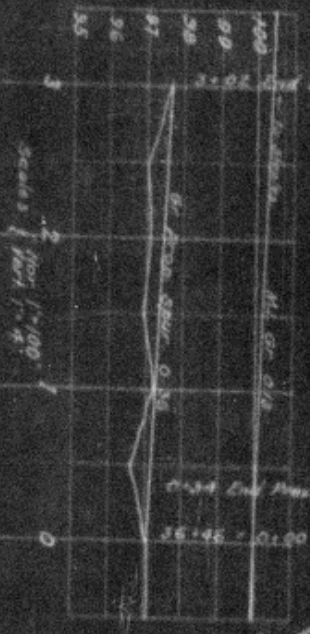
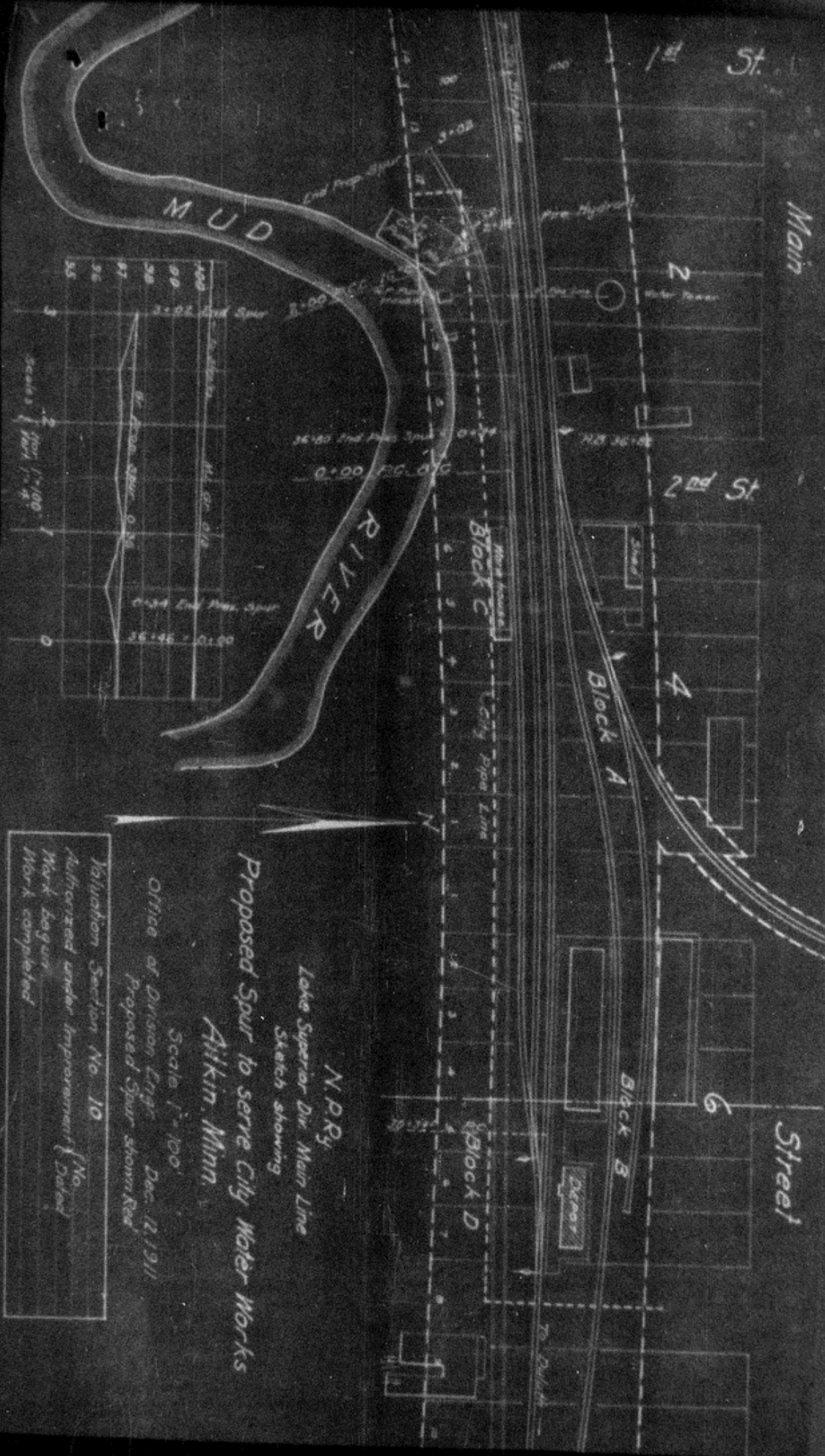
	<u>Labor</u>	<u>Material</u>	<u>Total</u>
Grading 50 cu. yds. @ 30¢	15.00		15.00
Gross ties 134 pcs. @ 47¢		62.98	62.98
Rail 534 ft. 3d cl. 56¢ - 4.47 T @ \$21.00		93.67	93.67
Angle bars 56½ lb. pr. @ 52¢		9.36	9.36
Track bolts 72 pcs. @ \$2.33 per 100		1.68	1.68
Track spikes 1½ kegs @ \$4.00		6.00	6.00
Crossing plank 700 F.M. @ \$21.00	6.00	14.70	20.70
Handling rail 4.47 T @ \$1.00	4.47		4.47
Laying, lining & surfacing - 268 ft. @ 12¢	32.16		32.16
Freight on rail from St. Paul - 720 T.M. @ .005		3.65	3.65
	<u>56.63</u>	<u>192.24</u>	<u>248.87</u>
Engineering & Incidentals	5.13		5.13
	<u>61.76</u>	<u>192.24</u>	<u>254.00</u>

Office of Division Engineer,
Saint Paul, December 12, 1911.

LY-No. 463

Amical
Superintendent

W. J. [Signature]
Division Engineer



Valuation Section No. 10
 Authorized under Improvement No. _____
 Mark by year _____
 Mark completed _____

Office of Division Engrs. Dec. 12, 1911
 Proposed Spur shown Red
 Scale 1" = 100'

N.P.R.
 Lake Superior Div. Main Line
 Sketch showing
 Proposed Spur to serve City Water Works
 Atkin, Minn.

407M

NORTHERN PACIFIC RY. CO.
MAR 20 1912
OFFICE ANDOR BISS

Form 1345 1/2

12-11-21-11

PACIFIC RAILWAY COMPANY.

Lake Superior DIVISION

Duluth, Minn., March 19th

101 2

H. A. Gray,
Comptroller,
St. Paul, Minn.

Dear Sir:

I beg to advise you that work authorized by improvement, your
No. B covering Aitkin - Extend Foley Spur
was completed during January
as follows:

1912 My record shows cost

Material,	\$ 229.23
Labor,	\$ 47.70
Engineering,	\$ 11.11
Contract Work,	\$

Total	\$ 288.04 ✓
	31 03
	279 07

Yours truly,
R. M. Macdonald
Superintendent.

REMARKS: Appropriation \$254.00

Material cost \$37.00 more than estimated due to using 77 more
cross ties than estimated.

Cy. LY.

FEBRUARY