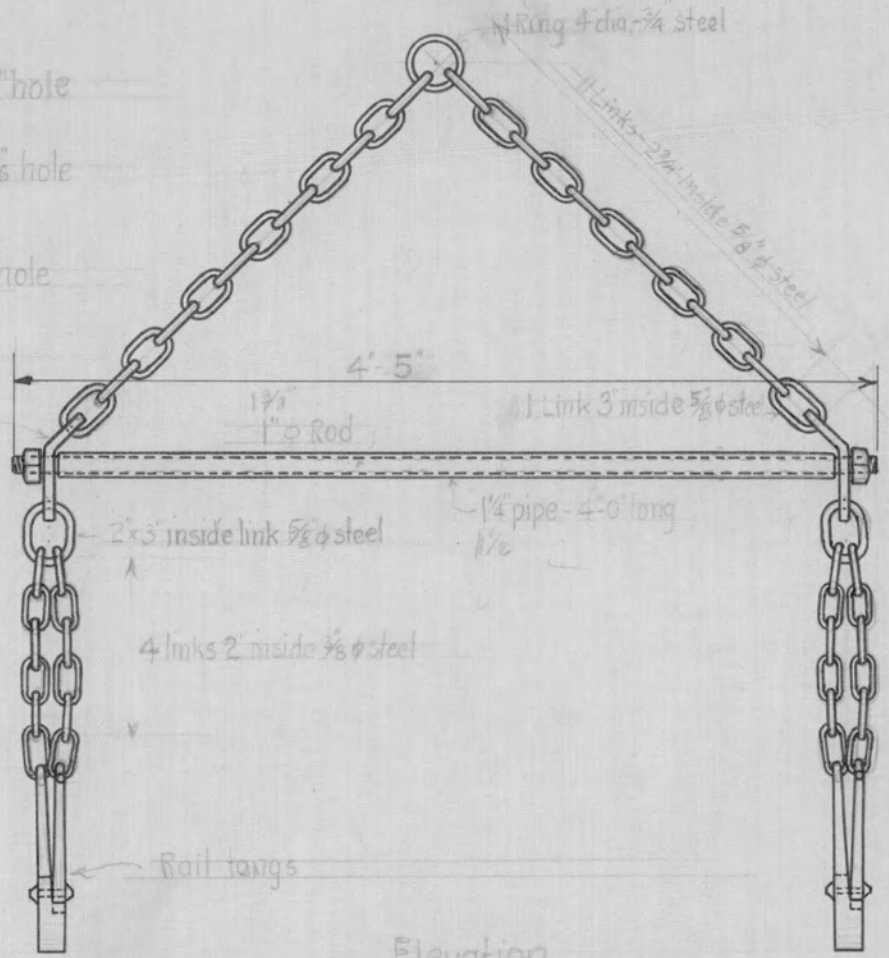


Detail of Clevice
Scale 3" = 1'-0"

Link 1/2" x 3" inside 1/2" steel

Detail of Tong
as per Stand Plan TT-4.
Scale: 3" = 1'-0"



Elevation
Scale: 1" = 1'-0"

N.P.Ry
Standard Plan
of Track Tools.

Rail Tongs for Locomotive Cranes.
Scale: 1" & 3" = 1'-0".
March 15th 1927

Chief Engineer
Vice President